

GENERATION

Podium

User Guide

LW/06.19



Generation UK Ltd
Trinity Street, Off Tat Bank Road,
Oldbury, West Midlands, B69 4LA
Tel: 0800 779 7113
Email: enquiries@generationuk.co.uk
www.generationuk.co.uk

Podium



BS 8620:2016 Podium

Safety Information:

IMPORTANT:

Never use the BS 8620:2016 Podium LLWP until you have read the instructions fully and understood the following guide.

ALWAYS carry out a risk assessment for each task before you start work, to ensure the BS 8620:2016 Podium is the correct mode of access for the task that is being undertaken.

Component List

- 1 x Main frame
- 1 x Access ladder
- 1 x Platform
- 2 x Stabilisers

Safety Checklist

- Make sure that the equipment is in good working order.

IMPORTANT, Never climb on the UTS BS8620 podium (LLWP) until you have checked the following:

- The ladder is secure and positioned correctly.
- The platform is secure and positioned correctly.
- All castors/baseplates and stabilisers are positioned correctly.
- The folding back section is locked.



**MADE IN
BRITAIN** 

- The total load (person and equipment) must not exceed 150KG.
- Make sure all castors are pointing outwards and locked correctly.
- Always make sure the ladder is located in the correct position.
- Ensure all components are present and correctly fitted before use.

All repairs should be carried out by the UTS Sales and Repairs, the manufacture.

Equipment Maintenance

- ✓ Check the BS 8620:2016 Podium LLWP main frame is not bent, twisted, dented and has no cracked welds.
- ✓ Check that fixings (usually weld rivets or bolts) are good, appropriate, not missing, loose.
- ✓ Check That components are not missing, loose, worn or damaged.
- ✓ Check that the locking mechanisms are operating locking correctly.
- ✓ Ladder hinge elbow locking joints platform clips are not broken.
- ✓ Check all caster wheels operate.
- ✓ Check that the entire BS 8620:2016 Podium LLWP is free from containments (e.g. dirt, mud, paint oil or grease)
- ✓ Check that the platform has no missing parts or fixings and is not damaged.

All replacement parts can be purchased from UTS Sales and Repairs



Read the instructions



Inspect before use



Only ascend or descend the LLWP using the access provided



Face the access when ascending and descending



Ensure all brakes are locked



Ensure side protection gate is closed and secured before use



Do not use on loose or slippery surfaces



Never more than one person



Do not overreach



Never stand on the side protection or use boxes, stepladders or other objects to gain extra height



Do not use damaged equipment



Do not use on sloping or uneven surfaces



Working Platform must be level



Never work near powerlines or other electrical equipment



Never use as a means of access to another place



Never stand on the access ladder to work



Never move when a person is standing on a work platform



Beware of finger traps where these potentially exist

Podium Instructions



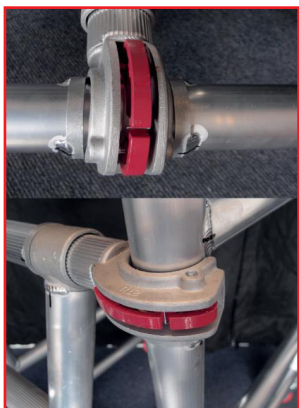
1. With the podium step in a closed position, ensure all castors are locked.



2. Open Rear frames and lock the locking elbow joints into position.



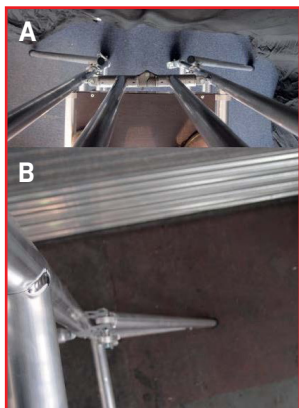
3. Square and position the platform at the chosen height and turn the wind lock to the closed position.



4. Position ladder on to lower rung and push down making sure ladder hooks are locked within the guides. Now do the same to the top of the ladder.



5. Make sure the castors are at a 45-degree angle and then lock into place.



6. Fit podium stabilisers at a 45-degree angle (see photo A) Unless against a wall (see photo B) Making sure stabiliser is located on the floor.

Podium Instructions



7. Stabiliser to be securely fixed to the podium by tightening the palm wheel and coupler.



8. Move the gate from the locked position and secure it behind you. **Make sure it is locked, never use the podium without locking the gate**



9. Using the ladder, climb onto the podium platform

Hire and Sale Branches Freephone:
0800 779 7113

Birmingham (West)

Trinity Street Off Tat Bank Road,
 Oldbury, West Midlands, B69 4LA
 T: 0121 544 3355 F: 0121 544 3131
 E: birmingham@generationuk.co.uk

Birmingham (East) G

87-93 Amington Road, Birmingham,
 West Midlands, B25 8ET
 T: 0121 706 0000 F: 0121 706 9832
 E: birminghameast@generationuk.co.uk

Bristol

Unit 7, 12-16 Foundry Lane, Fishponds,
 Bristol, B55 7UE
 T: 0117 972 4550 F: 0117 972 4502
 E: bristol@generationuk.co.uk

Cardiff

Martin Road, Tremorfa Industrial Estate
 Cardiff, CF24 5SD
 T: 029 2046 3835 F: 029 2046 3246
 E: cardiff@generationuk.co.uk

Edinburgh

4 Westerton Road,
 East Mains Industrial Estate, Broxburn,
 West Lothian, EH52 5AU
 T: 01506 863 864 F: 01506 863 916
 E: edinburgh@generationuk.co.uk

Frimley (West London)

22-30 Sturt Road, Frimley Green
 Camberley, GU16 6HY
 T: 01252 838 696 F: 01252 837 614
 E: frimley@generationuk.co.uk

Gateshead G

Stonegate Lane, Abbotsford Road,
 Felling, Gateshead, NE10 0EX
 T: 0191 469 7504 F: 0191 469 8237
 E: gateshead@generationuk.co.uk

Glasgow

Duchess Road, Rutherglen
 Glasgow, G73 1AU
 T: 0141 647 6969 F: 0141 647 5851
 E: glasgow@generationuk.co.uk

Grays G

Europa Business Park, Magnet Road,
 Grays, Essex, RM20 4DB
 T: 01375 312 120 F: 01375 386 844
 E: grays@generationuk.co.uk

Leeds

Unit 2 Ledger Park, Haigh Park Road,
 Stourton, Leeds LS10 1RT
 T: 0113 277 8822 F: 0113 277 7545
 E: leeds@generationuk.co.uk

London (East)

Unit H, Hangman's Wood Ind Park,
 Stifford Road, South Ockendon,
 Essex, RM15 6RL
 T: 020 7473 6056 F: 01708 858 493
 E: london@generationuk.co.uk

Newcastle

Forward House, Portobello Road
 Portobello Industrial Estate, Birtley,
 Tyne and Wear, DH3 2SN
 T: 0191 492 1190 F: 0191 411 1148
 E: newcastle@generationuk.co.uk

Northampton

Kingsfield Way, Dallington,
 Northampton, NN5 7QN
 T: 01604 580 444 F: 01604 580 487
 E: northampton@generationuk.co.uk

Salsburgh G

Duntilland Road, Shotts, Salsburgh,
 North Lanarkshire, ML7 4NZ
 T: 01698 870 200 F: 01698 870 159
 E: salsburgh@generationuk.co.uk

Stockport

Unit 4 Vauxhall Industrial Estate,
 Greg Street, Reddish,
 Stockport, SK5 7BR
 T: 0161 477 0131 F: 0161 477 7618
 E: stockport@generationuk.co.uk

West Thurrock (East London)

4 Riverside Ind. Park, Oliver Road,
 West Thurrock, RM20 3ED
 T: 020 7476 4760 F: 020 7476 3157
 E: westthurrock@generationuk.co.uk

Widnes G

Pitt Street, West Bank, Widnes,
 Cheshire, WA8 0TG
 T: 0151 420 3331 F: 0151 495 2298
 E: widnes@generationuk.co.uk

Altrad Training Services

Unit 20B Greens Industrial Park,
 Calder Vale Road, Wakefield, WF1 5PH
 T: 01924 370 640 F: 01924 377 530
 Freephone: 0800 587 5224
 E: training@altraduk.co.uk

Generation Export

Trinity Street, Off Tat Bank Road
 Oldbury, West Midlands, B69 4LA
 T: +44 (0) 121 543 2964
 E: export@generationuk.co.uk

Generation UK Head Office

Trinity Street, Off Tat Bank Road
 Oldbury, West Midlands, B69 4LA
 T: 0121 543 2950 F: 0121 543 2953
 E: enquiries@generationuk.co.uk

G GROUNDWORKS



GENERATION UK Ltd
 Generation Head Office, Trinity Street, Off Tat Bank Road, Oldbury, West Midlands, B69 4LA - United Kingdom
 Tel. 0121 543 2950 - Fax. 0121 543 2953 - enquiries@generationuk.co.uk
www.generationuk.co.uk