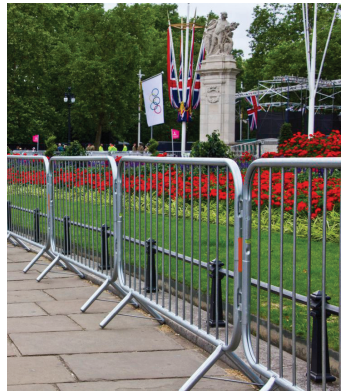
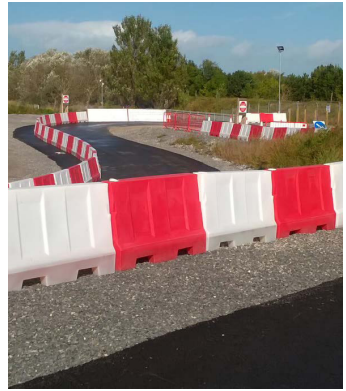


# GENERATION

## Temporary Fencing Product Guide

LW/05.19



Generation UK Ltd  
Trinity Street, Off Tat Bank Road,  
Oldbury, West Midlands, B69 4LA  
Tel: 0800 779 7113  
Email: [enquiries@generationuk.co.uk](mailto:enquiries@generationuk.co.uk)  
[www.generationuk.co.uk](http://www.generationuk.co.uk)

# **GENERATION SCAFFOLDING AND ACCESS SUPPORT FOR CONSTRUCTION AND INDUSTRY**

Generation is the largest UK supplier of access, scaffolding, temporary fencing and training products. Our customer promise is to deliver the:

## **BEST QUALITY**

We work in partnership with our suppliers to ensure we deliver consistent quality every time. We guarantee that our hire and sales products will meet and conform or exceed all statutory requirements and not let you down.

## **BEST AVAILABILITY**

We have the largest available UK inventory of temporary fencing, water filled and pedestrian barrier products. Our branch network and delivery fleet will ensure that we deliver what you need, when you need it.

## **BEST PARTNERSHIP**

We provide a full range of engineering, design and business services to partner and work with our customers. Talk to us today about how we can help you to grow your business.

## **BEST PRICES**

We use our position as the largest UK supplier of fencing and water filled products to negotiate the best rates for you. We guarantee you will get the best value products and service when you hire or buy from us.

### **Disclaimer**

Whilst Generation (UK) Ltd has taken every reasonable effort to ensure the information contained within this publication is correct and complete at the time of printing, you should be aware that there will be periodical changes and Generation (UK) Ltd does not accept any liability for any inconvenience, loss or damage caused as a result of any inaccuracy or omission within this publication.

### **Copyright**

No unauthorised reproduction of any images, text or other matter contained herein is permitted. All rights are expressly reserved, including copyright, design right, moral and patent rights (where applicable). We reserve the right to take legal action in respect of any infringement of said rights.

# Contents

## Water Filled & Self Weighted Barriers

Evo Barrier .....	5
Pyramid Barrier .....	5
RB2000 Barrier .....	6
GB2 Barrier .....	6
Bison Barrier .....	7
RB22 Barrier .....	7
Rota Block Mini.....	8
Slot Block.....	7
StrongWall .....	9
MASS Siteguard.....	9

## Temporary Fencing

Heavy Duty Round Top Anti-Climb Panels.....	11
Standard Anti-Climb Panels.....	11
Temporary Fencing Accessories .....	12
Fencing Stability .....	13
Acoustic Barrier System .....	13

## Hoarding Panels

Hoarding Panels .....	15
Hoarding Panel Accessories.....	16
Hoarding Stability.....	16

## Pedestrian Barriers

Fixed Leg Barrier .....	18
Fixed Leg Walkthrough Barrier.....	18
Chapter 8 Barrier .....	19

## Customer Portal

Wind Speed Calculator .....	20
-----------------------------	----



## **Water Filled & Self Weighted Barriers**

Evo Barrier

Pyramid Barrier

RB2000 Barrier

GB2 Barrier

Bison Barrier

RB22 Barrier

Rota Block Mini

Slot Block

StrongWall

MASS Siteguard

## GENERATION EVO BARRIER



MIRA Wind Speed Test  
**55mph** When water filled

- Versatile and variable height barrier system that creates a solid wall when linked together for traffic demarcation and pedestrian safety.
- The EVO design allows the 3 different sizes to interlock and deliver barrier protection at variable heights.
- Fully stackable to make them easy to transport and store with a high barrier to pallet ratio and full load quantities.
- Constructed in UV stabilized prime polyethylene and water/sand filled to provide more stability where longer term use is required.
- Fast and easy to assemble on site with no additional lifting equipment required.
- Compatible to fit reflective post, plank or mini mesh panels.

**L** : 1000mm    **Weight** : 7kg  
**H** : 555mm    **With ballast** : 35kg  
**W** : 400mm    \*More sizes and colours available.

## GENERATION PYRAMID BARRIER



MIRA Wind Speed Test  
**mph** When water filled

- This traffic separator comes in standard red and white finish but can be produced on corporate colours if required dependent upon quantity.
- This low level barrier is unique in the way that it rotates a full 90 degrees without the need for specialist items, this enables contractors to literally 'box off' projects.
- Stackability is no issue and is compatible with most of the existing barriers available on the market.
- A 455mm mesh topping is available to an overall height of 1m.

**L** : 1000mm    **Weight** : 5kg  
**H** : 560mm    **With ballast** : 55kg  
**W** : 400mm

## GENERATION RB2000 BARRIER



MIRA Wind Speed Test  
**72mph** When water filled  
 (barrier Only)

- For complete road, site safety and security a 1m high heavy duty low level containment barrier.
- Compatible with most of the RB system.
- Its five-position unlocking system makes it highly flexible and it flows around corners and uneven surfaces.
- Constructed in UV stabilized prime polyethylene it weighs up to 400kg to create a solid secure system.
- Anti-climb mesh and hoarding panels can be added to increase height and security.
- Front and end stops to prevent trip hazard and improve pedestrian safety.

**L** : 2000mm    **Weight With**  
**H** : 1000mm    **ballast** : 400kg  
**W** : 400mm

\*Working Length 1.65m.

## GENERATION GB2 BARRIER



MIRA Wind Speed Test  
**78mph** When water filled  
 (barrier Only)

- Ideal product for highway or site delineation for pedestrian & vehicle safety.
- A robust heavy duty adaptable barrier system suitable for low level demarcation.
- This barrier has a 2 metre working length and height of 0.9 metre with a pin locking device which allows each barrier to have a 35 degree configuration to adapt to angles and curves.
- Fully stackable for transport and storage.
- Anti-climb mesh and hoarding panels can be added to increase height and security.

**L** : 2000mm  
**H** : 900mm  
**TH** : 2250mm

## GENERATION BISON BARRIER



MIRA Wind Speed Test

**78mph** When water filled (barrier Only)

- The Bison Barrier is a Water filled barrier ideal for designating safe routes for pedestrians and vehicles.
- Fully stackable with an anti-slide feature for transportation and storage.
- Available in red and white with Chapter 8 compliant reflective strips fitted as standard for greater visibility & safety.
- Designed using a pin locking system which allows a 90-degree angle between barriers so that multiple configurations can be created to suit site constraints which makes it the ideal product for inner city projects where space is at a premium.
- Solid hoard or mesh panels can be added to the top of these barriers to increase security.

## GENERATION RB22 CRASH TESTED BARRIER



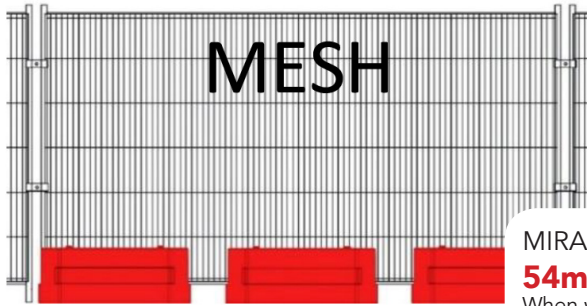
MIRA Wind Speed Test

**78mph** When water filled (barrier Only)

- One piece moulded crash barrier system that will bring a car to a controlled stop.
- Crash tested whilst free standing at 50Mph (80KMph) to conform with BS EN1317-N1.
- Reusable after impact if not punctured/damaged.
- Lighter, looks better and easier to transport than concrete equivalent and does not require heavy equipment required to load/unload and assemble.
- Easy to lock together in formation with quick secure pin hinge set on two flat, screw fitted, steel plates for strength, speed and ease of assembly.
- Constructed in UV stabilized prime polyethylene and water filled during insertion and assembly.

**L** : 2000mm    **Weight** : 60kg  
**H** : 800mm    **With ballast** : 600kg  
**W** : 500mm

# GENERATION ROTA BLOCK MINI FOR MESH



MIRA Wind Speed Test  
**54mph - 73mph\***  
When water filled

- A water filled stabilising barrier, designed to secure variable length fence panels up to 2 meters high, and can accommodate various fence lengths.
- The secure safety chain fastening provides stability and allows for easy adjustment where needed.
- The design allows it to adapt to corners, angles and uneven ground with ease.
- Its compact size and UV stabilized prime polyethylene block construction makes it easy for transportation and handling.

**L** : 1000mm    **Weight** : 8.9kg  
**H** : 400mm    **With ballast** : 105kg  
**W** : 390mm

\* Based on Configuration

# GENERATION SLOT BLOCK



MIRA Wind Speed Test  
**57mph** When water filled

- The Slot Block is a water filled barrier, designed to fit an industry standard 3.5 x 2m mesh panel to provide additional security, stability and prevent re-erection and damage to fencing.
- Designed to reduce the working footprint by 390mm
- against a standard fence block it is ideal for inner-city projects or where space is at a premium.
- It rotates at 45 degrees to provide flexibility in set up.
- 1250 x 150 reflective strips and lights can be added for increased visibility.

**L** : 1750mm    **Weight** : 14kg  
**H** : 600mm    **With ballast** : 320kg  
**W** : 380mm    per 3.5m set.



# GENERATION STRONGWALL WITH MESH FENCING



MIRA Wind Speed Test  
**32mph\***

- Strong Wall Barriers are designed to provide pedestrian or vehicle safety at site works or events.
  - Stable and rigid with a self-weighted base that allows water to be added to provide additional stability and support to attach secure mesh panels for added safety and security.
  - Chapter 8 safety marking compliant for road use.
  - Quick and easy to install.
  - Can be supplied in white, red, and orange.
- L** : 1000mm    **Weight** : 22kg  
**H** : 1000mm    **With ballast** : 39kg  
**W** : 520mm
- \* Self Weighted

# MASS SITEGUARD AND FENCING



**Wind Resistant**

- The MASS Barrier is a crash tested steel barrier, anchored with a steel buffer lined with sandbags designed to support a range of mesh fencing for the job you require.
  - Siteguard is anti-climb mesh fencing designed to provide high security for the site, workers and equipment around airport terminals, buildings and roads.
  - Easy to assemble and install. Each unit links together via vertical pins and specially adapted units enable the system to rotate through 180°. which provides flexibility with location and siting.
  - Strong long lasting build of galvanised tube, which is powder coated to provide high visibility colours.
- L** : 1500mm    **Weight** : 48kg  
**H** : 420mm  
**W** : 500mm



# Temporary Fencing

Heavy Duty Round  
Top Anti-Climb Panel

Standard Anti-Climb  
Panels

Temporary Fencing  
Accessories

Fencing Stability

Acoustic Barrier  
System

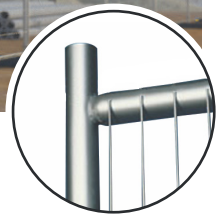
# HEAVY DUTY ROUND TOP ANTI-CLIMB PANEL



- The heaviest and strongest round top panel with anti-climb mesh fence panel where security is at a premium.
- Fully HSG151 compliant to ensure on-site product compliance and safety.
- Strength, security and longevity delivered through Smartweld technology.
- A 360° weld on 38mm tube with fitted corner webs.
- Low profile and lightweight for easy stacking and transportation.
- 100% product quality and traceability, with every panel tested, passed and provided with a unique ID in the factory.

**L** : 3450mm    **Weight** : 16.0kg  
**H** : 2000mm

# STANDARD ANTI-CLIMB PANEL

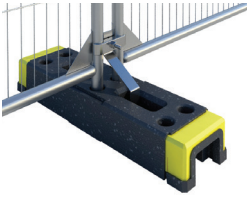


- Light weight anti-climb mesh panel that provides a value effective alternative to heavy duty panelling.
- Speak to your Generation team about which is the most suitable panel for your site or event.
- Full HSG151 compliant panel with anti-climb mesh.
- Low profile and lightweight and easy to stack and transport.
- 100% product quality and traceability, with every panel tested, passed and provided with a unique ID in the factory.

**L** : 3450mm    **Weight** : 13.6kg  
**H** : 2025mm

Available in Heavy Duty, Light Duty, and with corner brackets.

# TEMPORARY FENCING ACCESSORIES



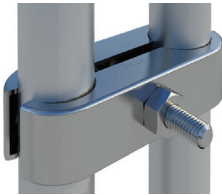
**369046** Hi-Vis Plastic Foot



**369048** Fence Coupler



**369054** Heavy Duty Lockable Gripper Coupler



**369421** Gripper Coupler



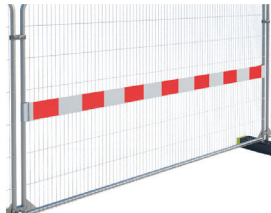
**369049** Anti-Lift Device



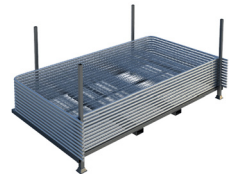
**369100** Fence Stabiliser



**369408** Stabiliser Pin



**369104** Reflective Board



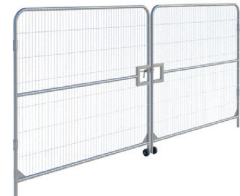
**369000** Fence Stillage



**369112** Barbed Wire Bracket - Round Top



**369056** 1m Anti-Climb Round Top Ped Gate c/w Hinge



**369057** 4.2m Anti-Climb Round Top Vehicle Gate Latch and Hinge.

## FENCING STABILITY



**369102** Fence Stabiliser (HSG151) Small



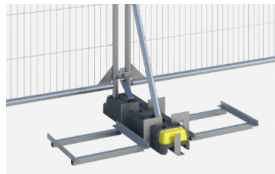
**369100** Fencing Stabiliser



**369403** Hoarding Stabiliser  
**369404** Hoarding Rear Block Tray  
**369446** Hoarding Stabiliser Brace



**369102** Fence Stabiliser (HSG151) Small  
**369451** 50kg Ballast Bock



**369102** Fence Stabiliser (HSG151) Small  
**369096** Block Cradle



**369106** Zero Trip Stabiliser Brace  
**369107** Zero Trip Cranked Stabiliser

## ACOUSTIC BARRIER SYSTEM



- Water and fire proof PVC and foam acoustic barriers that reduces site noise by 30 decibels.
  - Increasingly important on sites to improve worker welfare and maintain community relations. Commonly used in highly populated areas where noise and proximity will cause issues and complaints i.e. city centre sites, late night work on rail track maintenance and road works.
  - Lightweight and roll up design makes it easy to store, transport and construct by attaching to any site fencing or scaffolding.
  - Reflective strips for night time visibility and easy to add signage and branding.
  - BS EN 60529 Compliant.
- L** : 1200mm **Weight** : 6kg  
**H** : 2000mm
- Fixing kits available.
- (Use 3 Acoustic Barriers per 3.5m wide fence)
- \*Corporate branding available.

# Hoarding Panels

Hoarding Panel

Hoarding Panel  
Accessories

Hoarding Stability



# HOARDING PANELS



- Generation Heavy Duty Steel Hoarding Panels are a solid and secure panel system that provides a more robust barrier than mesh fencing.
- Can be provided in a galvanised, powder or plastic coated finish. The latter enable stock colours or signage to be printed onto hoardings.
- Ideal solution to prevent unauthorised access, perimeter fencing, privacy requirements, and protection of the public.
- Generation provides full advice and the range of accessories to ensure the solid panelling is stable in windy site conditions.
- Easy to erect to form a solid, secure panel system.
- For increased safety and optimum performance, Generation recommend using the Windbreaker System for stabilisation.

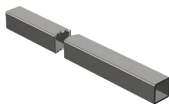
**L** : 2140mm **Weight** : 25.3kg

**H** : 1980mm\*

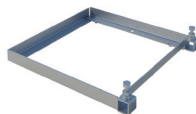
\*Also available at 2.4m height.

## GENERATION WINDBREAKER SYSTEM

Generation provide a free site wind assessment to ensure you get the right fencing and hoarding for your site. Our range of products, expert support and wind portal analysis provides will identify the right wind-breaker and stability systems for your needs.



**369443** Windbreaker Bottom Tube



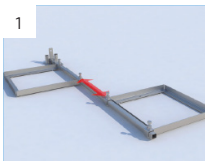
**369442** Windbreaker Block Tray



**369403** Hoarding Stabiliser



**369444** Windbreaker Zero-Trip Foot



# HOARDING PANEL ACCESSORIES



**369046** Hi-Vis Plastic Foot



**369421** Gripper Coupler



**369049** Anti-Lift Device



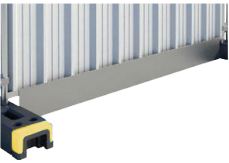
**369402** Hoarding Vehicle Gate



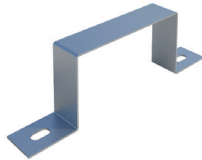
**369415** Hoarding Pedestrian Gate



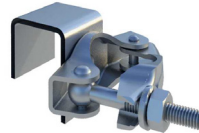
**369405** Galvanised Infill Sheet



**369411** Galvanised Infill Skirt



**369097** Hoarding Block Retaining Bracket



**369416** Scaffold to Hoarding Coupler



**369440** Hoarding Stillage

# HOARDING STABILITY



**369403** Hoarding Stabiliser  
**369404** Hoarding Rear Block Tray  
**369446** Hoarding Stabiliser Brace

**Now Available**



Windbreaker Stabiliser - Reduced Footprint



**369444** Windbreaker Zero Trip Foot  
**369443** Windbreaker Connecting Tube  
**369403** Hoarding Stabiliser  
**369442** Windbreaker Loading Tray

**Now Available**



Big Foot Stabiliser (780kg)



# Pedestrian Barrier

Fixed Leg Barrier

Fixed Leg Walk-  
Through

Chapter 8 Barrier



## FIXED LEG BARRIER



- Standard crowd control barrier ideal for marking out restricted areas and direct crowds and fixed feet provide high degree of stability.
  - Made from galvanised steel to prevent rusting and meets BS EN 10244-2 quality standards.
  - Powder coating options available.
- L** : 2262mm **Weight** : 10.6kg  
**H** : 1100mm

## FIXED LEG WALKTHROUGH \*ALSO AVAILABLE WITH GATE



- Provides easy access point for pedestrians in conjunction with crowd control barriers.
  - Matches and is interchangeable with Generation fixed leg pedestrian barriers and standard Industry barriers.
  - In red to enhance visibility and improve flow of pedestrian traffic.
  - Made from galvanised steel to prevent rusting and meets BS EN 10244-2 quality standards.
- L** : 2266mm **Weight** : 12.9kg  
**H** : 2143mm

# CHAPTER 8 BARRIER



- Complies with BS 7818 making it ideal for event management and pedestrian control.
  - Linking system design creates secure joints on even or uneven terrain.
  - Constructed from tough, high density polythene (HDPE).
  - Designed for secure stacking and easy transportation.
  - Compliant with Chapter 8 street works.
  - Available with Anti-Trip foot options.
- L** : 2000mm    **Weight** : 9kg  
**H** : 1000mm
- \*Other colours available on request. Company branding also available.

# CUSTOMER PORTAL

The Generation wind-load calculation service is a technical support resource specifically designed to help sites meet the requirements of BS5975 'Temporary Works Design' relative to temporary fencing and hoarding installations.

The service provides Generation customers with general guidance on the expected wind resistance capabilities of a range of freestanding fence panel products with various stability systems to help them choose the right product for safety and security for their site.

Before using the Portal or requesting advice it is advisable to obtain your own site specific information such as prevailing wind speeds, direction of wind, location (coastal, inner city or exposed sites are more prone to the elements for example) and if a factor of safety is stipulated. Once the site specific wind speed has been obtained you can then configure a panel and stabilisation system to match those conditions. The resistance values are approximations and are for general guidance only.

The readings in this document refer to zone D which relates to 4th fence panel or 5th hoarding panel in a continuous run.

The results are based on the chosen stability method to be installed on every panel.

Note that wind-load calculation data is based on Generation product specifications and as such are only applicable to these products sourced from Generation either for hire or sale. Market alternatives may not give the same result as these readings so this document must not be used as reference to competitors products.

**Your Results:**  
Windbreaker Stabiliser

 <b>Max wind speed for your configuration</b> 66.92 m/s, 149.70 mph	 <b>Loading requirement</b> 11kg front, 11kg back	 <b>Success</b> This stabilisation meets your target wind speed. The product will be fully stabilised against the inputted wind speed.
---	---	--

**Your Selections**

 <b>Target Wind Speed</b> 20 m/s	 <b>RT38 Standard</b> 05553/31
 <b>Factor of Safety</b> 1 (0%)	 <b>Windbreaker Stabiliser</b>

## NOTES

Hire and Sale Branches Freephone:

**0800 779 7113**

**Birmingham (West)**

Trinity Street Off Tat Bank Road,  
Oldbury, West Midlands, B69 4LA  
T: 0121 544 3355 F: 0121 544 3131  
E: [birmingham@generationuk.co.uk](mailto:birmingham@generationuk.co.uk)

**Birmingham (East) **

87-93 Amington Road, Birmingham,  
West Midlands, B25 8ET  
T: 0121 706 0000 F: 0121 706 9832  
E: [birminghameast@generationuk.co.uk](mailto:birminghameast@generationuk.co.uk)

**Bristol**

Unit 7, 12-16 Foundry Lane, Fishponds,  
Bristol, BS5 7UE  
T: 0117 972 4550 F: 0117 972 4502  
E: [bristol@generationuk.co.uk](mailto:bristol@generationuk.co.uk)

**Cardiff**

Martin Road, Tremorfa Industrial Estate  
Cardiff, CF24 5SD  
T: 029 2046 3835 F: 029 2046 3246  
E: [cardiff@generationuk.co.uk](mailto:cardiff@generationuk.co.uk)

**Edinburgh**

4 Westerton Road,  
East Mains Industrial Estate, Broxburn,  
West Lothian, EH52 5AU  
T: 01506 863 864 F: 01506 863 916  
E: [edinburgh@generationuk.co.uk](mailto:edinburgh@generationuk.co.uk)

**Frimley (West London)**

22-30 Sturt Road, Frimley Green  
Camberley, GU16 6HY  
T: 01252 838 696 F: 01252 837 614  
E: [frimley@generationuk.co.uk](mailto:frimley@generationuk.co.uk)

**Gateshead **

Stoneygate Lane, Abbotsford Road,  
Felling, Gateshead, NE10 0EX  
T: 0191 469 7504 F: 0191 469 8237  
E: [gateshead@generationuk.co.uk](mailto:gateshead@generationuk.co.uk)

**Glasgow**

Duchess Road, Rutherglen  
Glasgow, G73 1AU  
T: 0141 647 6969 F: 0141 647 5851  
E: [glasgow@generationuk.co.uk](mailto:glasgow@generationuk.co.uk)

**Grays **

Europa Business Park, Magnet Road,  
Grays, Essex, RM20 4DB  
T: 01375 312 120 F: 01375 386 844  
E: [grays@generationuk.co.uk](mailto:grays@generationuk.co.uk)

**Leeds**

Unit 2 Ledger Park, Haigh Park Road,  
Stourton, Leeds LS10 1RT  
T: 0113 277 8822 F: 0113 277 7545  
E: [leeds@generationuk.co.uk](mailto:leeds@generationuk.co.uk)

**London (East)**

Unit H, Hangman's Wood Ind Park,  
Stifford Road, South Ockendon,  
Essex, RM15 6RL  
T: 020 7473 6056 F: 01708 858 493  
E: [london@generationuk.co.uk](mailto:london@generationuk.co.uk)

**Newcastle**

Forward House, Portobello Road  
Portobello Industrial Estate, Birtley,  
Tyne and Wear, DH3 2SN  
T: 0191 492 1190 F: 0191 411 1148  
E: [newcastle@generationuk.co.uk](mailto:newcastle@generationuk.co.uk)

**Northampton**

Kingsfield Way, Dallington,  
Northampton, NN5 7QN  
T: 01604 580 444 F: 01604 580 487  
E: [northampton@generationuk.co.uk](mailto:northampton@generationuk.co.uk)

**Salsburgh **

Duntilland Road, Shotts, Salsburgh,  
North Lanarkshire, ML7 4NZ  
T: 01698 870 200 F: 01698 870 159  
E: [salsburgh@generationuk.co.uk](mailto:salsburgh@generationuk.co.uk)

**Stockport**

Unit 4 Vauxhall Industrial Estate,  
Greg Street, Reddish,  
Stockport, SK5 7BR  
T: 0161 477 0131 F: 0161 477 7618  
E: [stockport@generationuk.co.uk](mailto:stockport@generationuk.co.uk)

**West Thurrock (East London)**

4 Riverside Ind. Park, Oliver Road,  
West Thurrock, RM20 3ED  
T: 020 7476 4760 F: 020 7476 3157  
E: [westthurrock@generationuk.co.uk](mailto:westthurrock@generationuk.co.uk)

**Widnes **

Pitt Street, West Bank, Widnes,  
Cheshire, WA8 0TG  
T: 0151 420 3331 F: 0151 495 2298  
E: [widnes@generationuk.co.uk](mailto:widnes@generationuk.co.uk)

**Altrad Training Services**

Unit 20B Greens Industrial Park,  
Calder Vale Road, Wakefield, WF1 5PH  
T: 01924 370 640 F: 01924 377 530  
Freephone: 0800 587 5224  
E: [training@altraduk.co.uk](mailto:training@altraduk.co.uk)

**Generation Export**

Trinity Street, Off Tat Bank Road  
Oldbury, West Midlands, B69 4LA  
T: +44 (0) 121 543 2964  
E: [export@generationuk.co.uk](mailto:export@generationuk.co.uk)

**Generation UK Head Office**

Trinity Street, Off Tat Bank Road  
Oldbury, West Midlands, B69 4LA  
T: 0121 543 2950 F: 0121 543 2953  
E: [enquiries@generationuk.co.uk](mailto:enquiries@generationuk.co.uk)

 GROUNDWORKS



GENERATION UK Ltd  
Generation Head Office, Trinity Street, Off Tat Bank Road, Oldbury, West Midlands, B69 4LA - United Kingdom  
Tel. 0121 543 2950 - Fax. 0121 543 2953 - [enquiries@generationuk.co.uk](mailto:enquiries@generationuk.co.uk)  
[www.generationuk.co.uk](http://www.generationuk.co.uk)